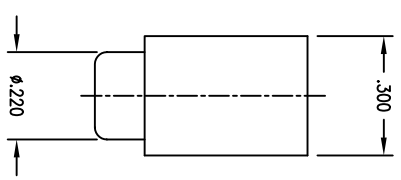
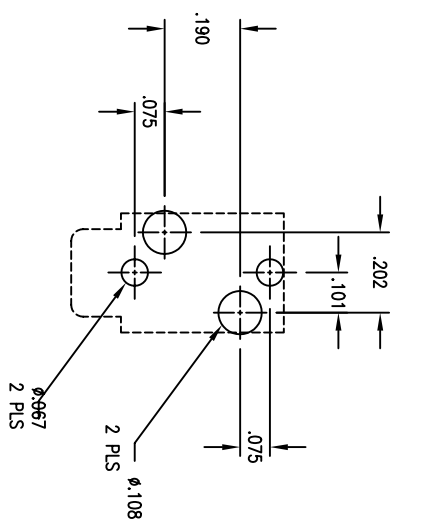
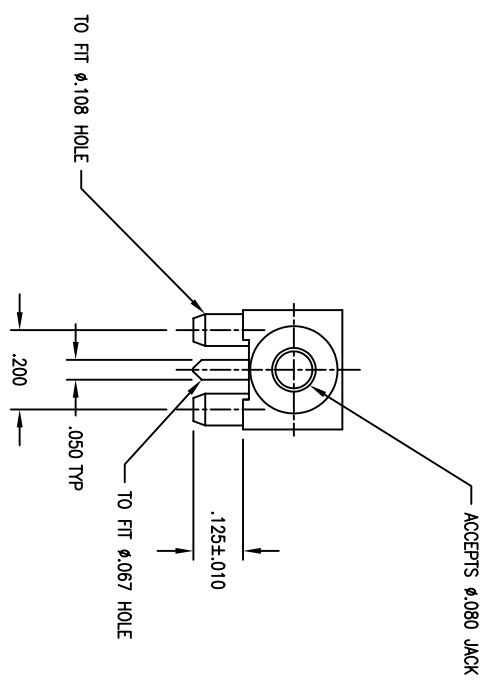
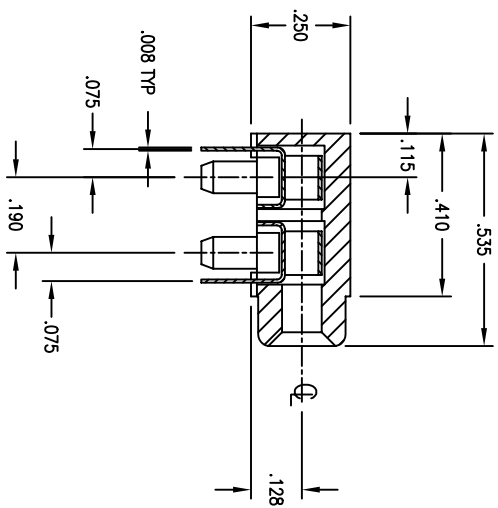


REVISIONS		DESCRIPTION	DATE	APPROVED
A	INITIAL RELEASE (ESR # 0157)		04-26-95	JWM

PCB LAYOUT (TOP VIEW)



- NOTES:**
- MATERIALS AND FINISH:**
 INSULATOR - GLASS FILLED PESTER, 94W-0 RATED.
 CONTACT MATERIAL - BERYLLIUM COPPER
 CONTACT PLATING - .000100 MATTE FINISH 60/40 Sn/Pb OVER .0000050 Ni
 INSULATION RESISTANCE - 5000 MEGOHMS
 - ELECTRICAL CHARACTERISTICS:**



AWI PART NUMBER	INSULATOR
8801P-1	BLACK
8801P-12	RED

CUSTOMER DRAWING

APPROVED		NAME	DATE
DESIGN	JWM	04-95	
CHECKED	YL	04-95	
QUALITY	WBK	04-95	
APPROVED	JWM	04-95	

ALL DIMENSIONS ARE IN INCHES.
 TOLERANCES:
 DECIMAL .XX ±.015
 .XXX ±.005
 ANGLE ±1/2°

THE INFORMATION, DATA AND/OR SERVICE PROVIDED ON THIS DRAWING ARE PROPRIETARY TO A.W. INDUSTRIES AND MAY NOT BE COPIED, REPRODUCED OR DISCLOSED IN ANY MANNER WITHOUT THE WRITTEN PERMISSION OF A.W. INDUSTRIES.

A.W. Industries, Incorporated
 6788 N.W. 17th AVENUE
 Fort Lauderdale, FL 33309

SIZE: C
 SCALE: NONE
 ACAD FILE NO: 03-0017-0A
 SHEET: 1 OF 1