

**NOTES:**

**1. MATERIALS AND FINISH:**

INSULATOR - GLASS FILLED POLYESTER, 94W-0 RATED.

CONTACT MATERIAL - BERYLLIUM COPPER

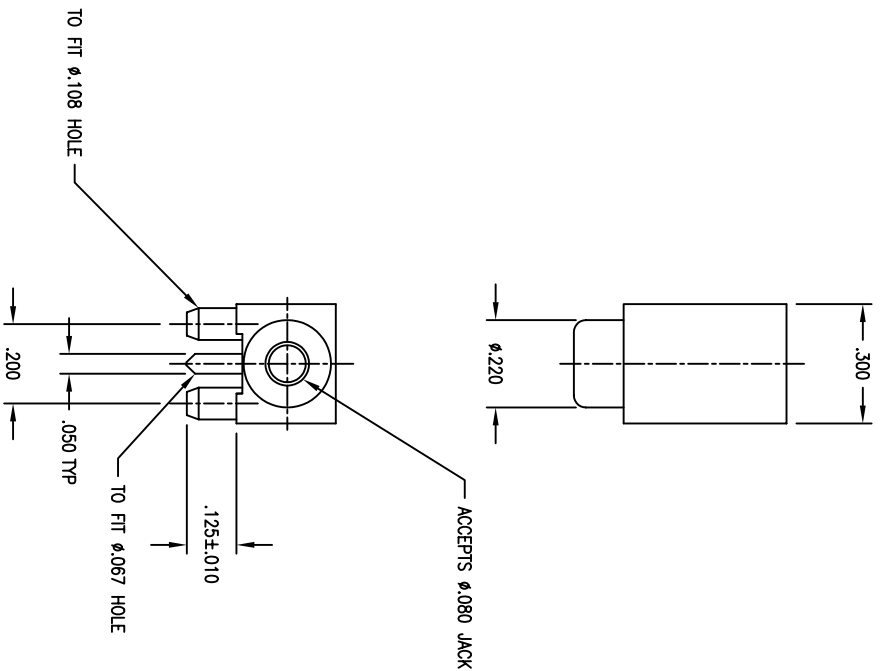
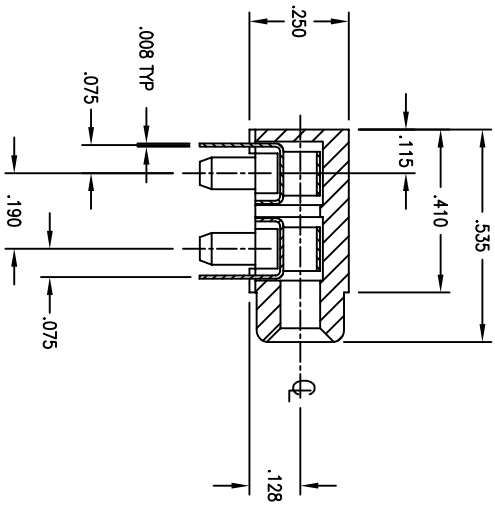
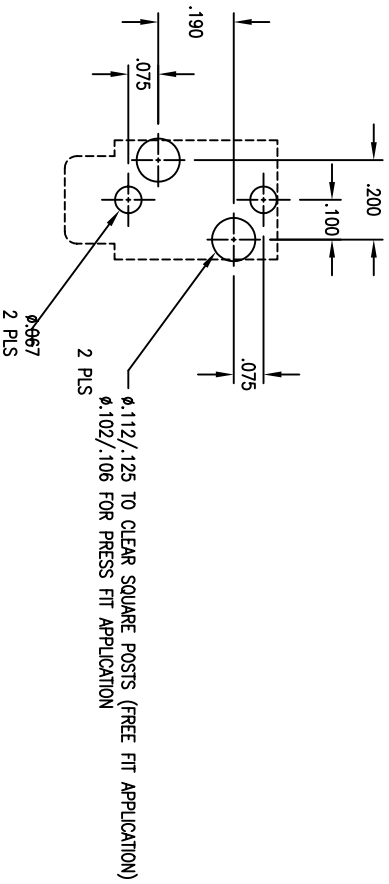
CONTACT PLATING - .000100 WHITE FINISH 60/40 Sn/Pb OVER .0000050 Ni

**2. ELECTRICAL CHARACTERISTICS:**

INSULATION RESISTANCE - 5000 MEGOHMS

AWI PART NUMBER	INSULATOR COLOR
8801P-1-239	BLACK
8801P-12-239	RED

**PCB LAYOUT (TOP VIEW)  
FOR SQUARE POSTS ONLY**



**CUSTOMER DRAWING**

TITLE  
080 TEST JACK  
SINGLE LAYOUT P (SQUARE POSTS)

**A.W. Industries, Incorporated**  
6788 N.W. 17th AVENUE  
Fort Lauderdale, FL 33309

APPROVED		NAME	DATE
DESIGN	JWM	04-95	
CHECKED	YL	04-95	
QUALITY	WBK	04-95	
APPROVED	JWM	04-95	

THE INFORMATION, DATA AND/OR SERVICES CONTAINED ON THIS DRAWING ARE PROPRIETARY TO A.W. INDUSTRIES AND MAY NOT BE COPIED, REPRODUCED OR DISCLOSED IN ANY MANNER WITHOUT THE WRITTEN PERMISSION OF A.W. INDUSTRIES.

ALL DIMENSIONS ARE IN INCHES.

TOLERANCES:  
DECIMAL .XX ±.015  
.XXX ±.005  
ANGLE ±1/2°

SIZE	C	DRG. NO.	8801P-XX-238
SCALE	NONE	ACAD FILE NO.	03-0312-0A
SHEET	1	OF	1

REV	DESCRIPTION	DATE	APPROVED
A	INITIAL RELEASE	04-26-95	JWM

**REVISIONS**