

REVISIONS

REV	DESCRIPTION	DATE	APPROVED
A	INITIAL RELEASE (ESR #1053)	09-04-97	JWM
B	SEE ESR #1546	10-19-98	JWM
C	SEE ESR #1546A	11-17-98	JWM

NOTES:

1. MATERIALS AND FINISH:

INSULATOR - HI-TEMP GLASS FILLED THERMOPLASTIC, 94W-0 RATED.

CONTACT MATERIAL - BERYLLIUM COPPER

CONTACT PLATING - .000200 MATTE FINISH 60/40 Sn/Pb OVER .0000050 Ni

2. ELECTRICAL CHARACTERISTICS:

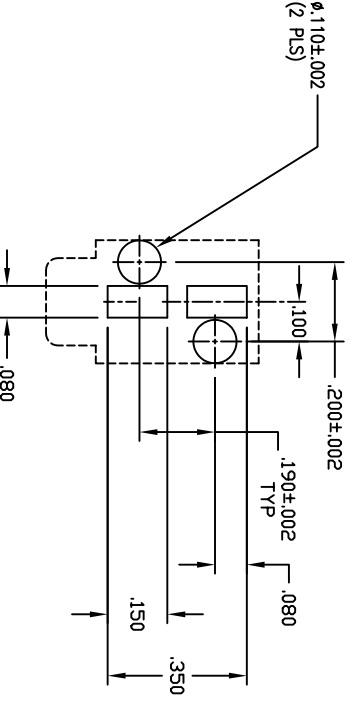
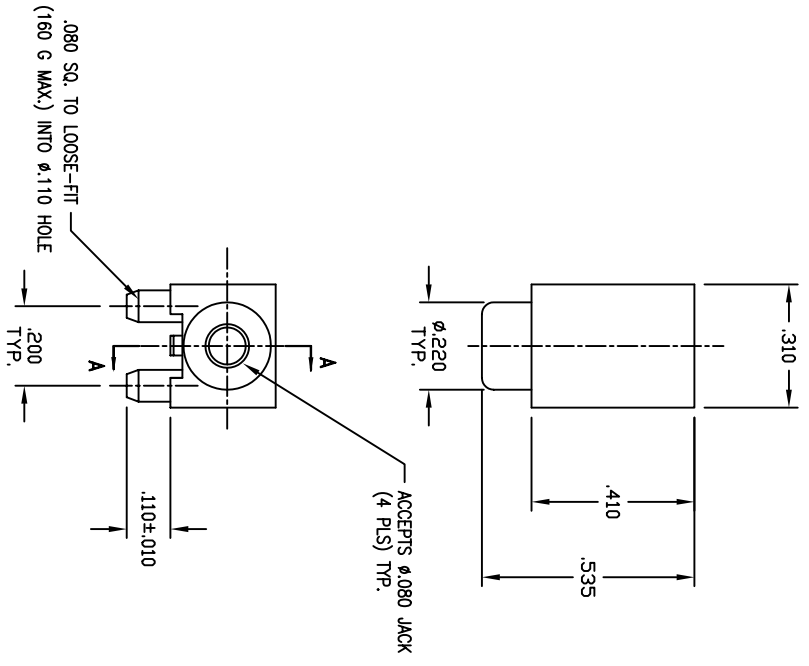
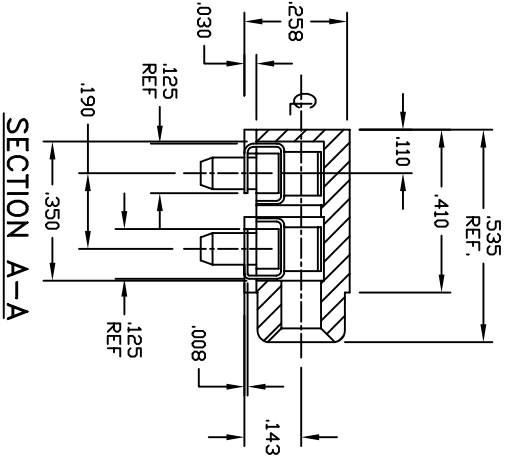
INSULATION RESISTANCE - 5000 MEGOHMS

3. MECHANICAL CHARACTERISTICS:

OPERATING TEMPERATURE - -55C TO +125C.

MAX. PROCESSING TEMPERATURE - 230C FOR 80 SECONDS.

LEAD COPPLANARITY - .006 MAX.



APPROVED

NAME	DATE
DESIGN JWM	09-97
CHECKED JMP	09-97
QUALITY DKJ	09-97
APPROVED JWM	09-97

THE INFORMATION, DATA AND/OR SERVICE CONTAINED ON THIS DRAWING IS THE PROPERTY OF A.W. INDUSTRIES AND MAY NOT BE COPIED, REPRODUCED OR TRANSMITTED IN ANY FORM OR BY ANY MEANS WITHOUT THE WRITTEN PERMISSION OF A.W. INDUSTRIES.

ALL DIMENSIONS ARE IN INCHES.
TOLERANCES:
DECIMAL .XX ±.015
.XXX ±.005
ANGLE ±1/2°

TITLE
SURFACE MOUNT, SINGLE LAYOUT P



A.W. Industries, Incorporated
6788 N.W. 17th AVENUE
Fort Lauderdale, FL 33309

SIZE C
SCALE NONE
DWG. NO. 8801P-1SM
SHEET 1 OF 1

RECOMMENDED PCB LAYOUT