

| REV |                                       | DESCRIPTION | DATE     | APPROVED |
|-----|---------------------------------------|-------------|----------|----------|
| A   | INITIAL RELEASE                       |             | 03-14-94 | JWM      |
| B   | ADDED DAUGHTER CARD LAYOUT (ESR 2297) |             | 09-16-02 | JWM      |

REVISIONS

NOTES:

1. MATERIALS AND FINISH:

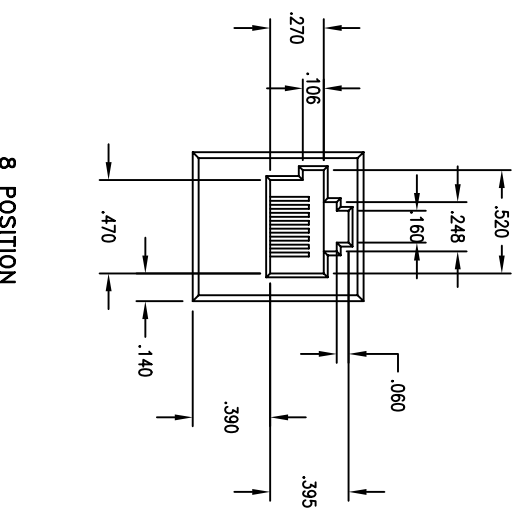
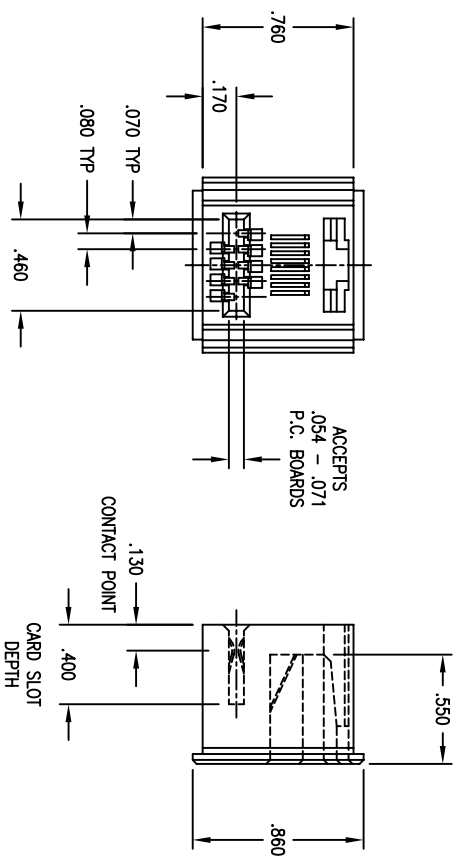
INSULATOR- GLASS FILLED THERMO-PLASTIC  
 POLYESTER, 94V-0 RATED, BLACK.  
 CONTACTS- BeCu XHM  
 CONTACT PLATING- .000050 NI ON ENTIRE CONTACTN  
 .000030 Au ON ALL ENGAGEMENT AREAS.

2. ELECTRICAL CHARACTERISTICS:

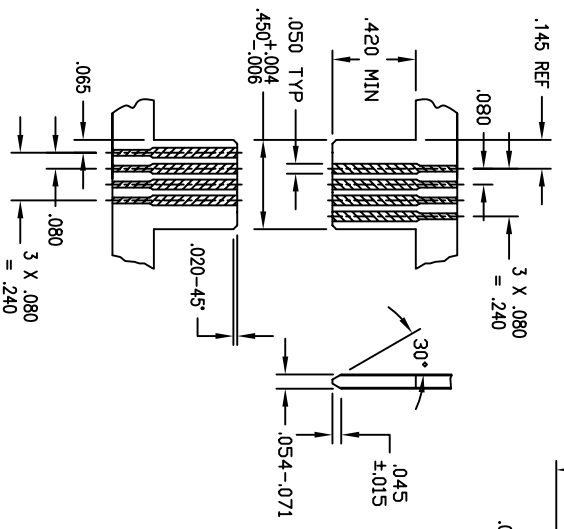
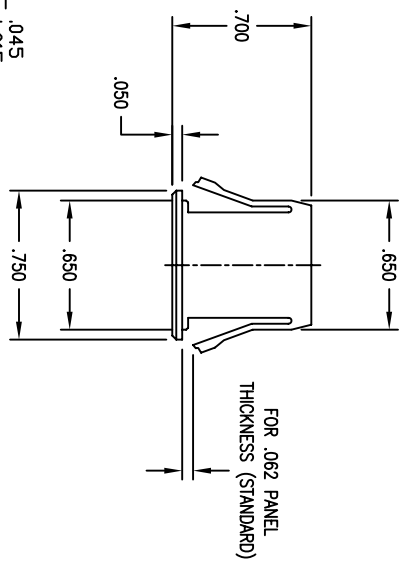
CONTACT RESISTANCE - 20 MILLIOHMS MAX.  
 DIELECTRIC WITHSTANDING VOLTAGE- 1000 VAC.  
 INSULATION RESISTANCE- 5000 MEGOHMS.  
 CONTACT CURRENT RATING- 0.5 AMPS AT 30°C.

3. MECHANICAL CHARACTERISTICS:

OPERATING TEMPERATURE- -55 TO +125°C.  
 DURABILITY- PER BELLOCOE TR-NWT-000078.



8 POSITION  
 KEYED  
 (08KH)



RECOMMENDED DAUGHTER BOARD LAYOUT

| APPROVED     |       |
|--------------|-------|
| NAME         | DATE  |
| JWM          | 03-94 |
| CHECKED YL   | 03-94 |
| QUALITY CBW  | 03-94 |
| APPROVED JWM | 03-94 |

ALL DIMENSIONS ARE IN INCHES.  
 TOLERANCES:  
 DECIMAL .XX ±.015  
 .XXX ±.005  
 ANGLE ±1/2°

THE INFORMATION, DATA, AND/OR SERVICES CONTAINED ON THIS DRAWING ARE PROPRIETARY TO A.W. INDUSTRIES AND MAY NOT BE COPIED, REPRODUCED OR DISCLOSED IN ANY MANNER WITHOUT THE WRITTEN PERMISSION OF A.W. INDUSTRIES.

**A.W. Industries, Incorporated**  
 6788 N.W. 17th AVENUE  
 Fort Lauderdale, FL 33309

SIZE: C  
 SCALE: NONE  
 DWG. NO.: 7608KH-154  
 SHEET: 1 OF 1