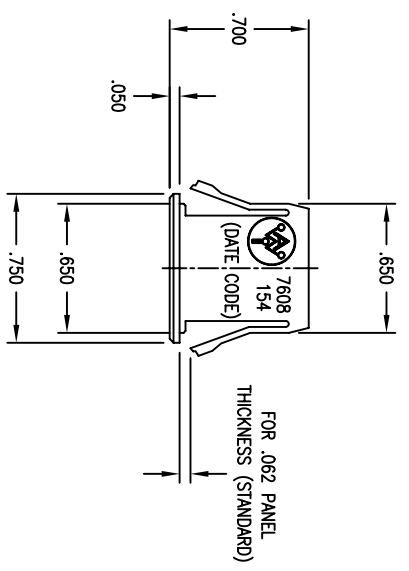
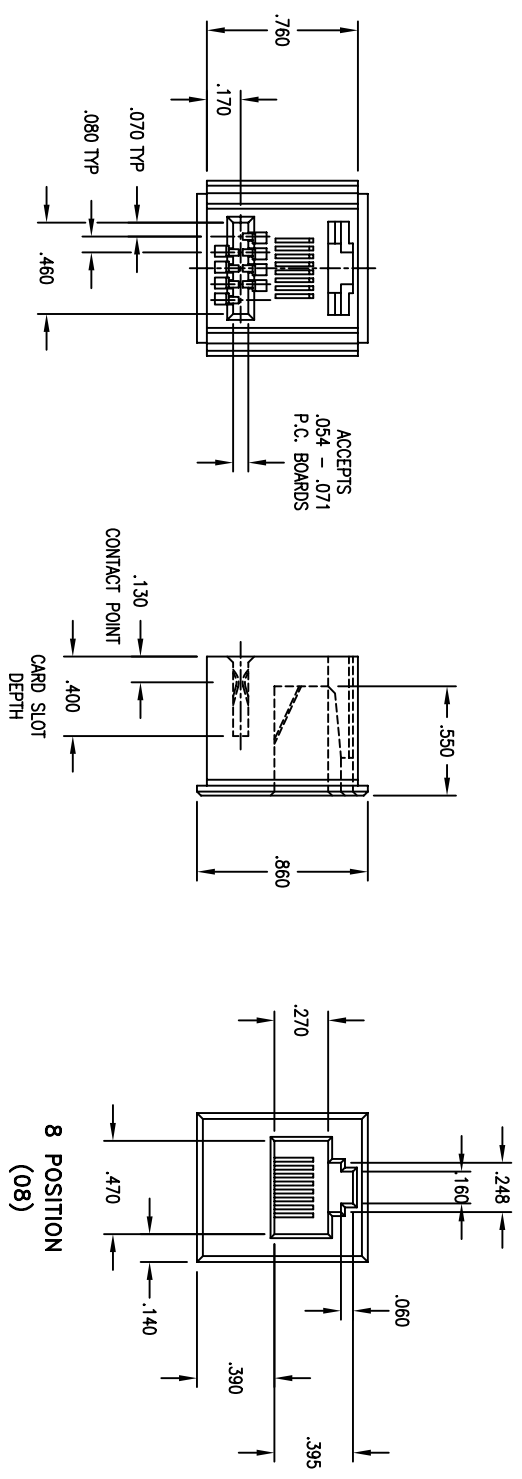


REV		DESCRIPTION	DATE	APPROVED
A	INITIAL RELEASE (ESR 0130)		04-05-95	JWM

REVISIONS

NOTES:

1. MATERIALS AND FINISH:
INSULATOR - GLASS FILLED THERMO-PLASTIC POLYESTER, 94W-0 RATED, BLACK.
CONTACTS - COPPER ALLOY (8&CJ)
CONTACT PLATING - .000050 NI ON ENTIRE CONTACTN
.000030 AU ON ALL ENGAGEMENT AREAS.
2. ELECTRICAL CHARACTERISTICS:
CONTACT RESISTANCE - 20 MILLIOHMS MAX.
CONTACT CURRENT RATING - 0.5 AMPS AT 30°C.
DIELECTRIC WITHSTANDING VOLTAGE - 1000 VAC.
INSULATION RESISTANCE - 5000 MEGOHMS.
3. MECHANICAL CHARACTERISTICS:
OPERATING TEMPERATURE - -55 TO +125°C.
DURABILITY - PER BELLCORE TR-NWT-000078.
4. MARKING AS SHOWN, WHITE INK.



CUSTOMER DRAWING

APPROVED		DATE
NAME	JWM	04-95
CHECKED	YL	04-95
QUALITY	WBK	04-95
APPROVED	JWM	04-95

ALL DIMENSIONS ARE IN INCHES.
TOLERANCES:
DECIMAL .XX ±.015
.XXX ±.005
ANGLE ±1/2'

THE INFORMATION, DATA AND/OR SERVICES CONTAINED ON THIS DRAWING ARE PROPRIETARY TO A.W. INDUSTRIES AND MAY NOT BE COPIED, REPRODUCED OR DISCLOSED IN ANY MANNER WITHOUT THE WRITTEN PERMISSION OF A.W. INDUSTRIES.

MODULAR JACK-CARD EDGE CONNECTOR
8 POSITION

A.W. Industries, Incorporated
6788 N.W. 17th AVENUE
Fort Lauderdale, FL 33309

SIZE C
SCALE NONE
ACAD FILE NO. 03-0037-0A
SHEET 1 OF 1

7608-154