

REV	DESCRIPTION	DATE	APPROVED
A	INITIAL RELEASE (ESR 1329)	03-18-98	JWM

REVISIONS

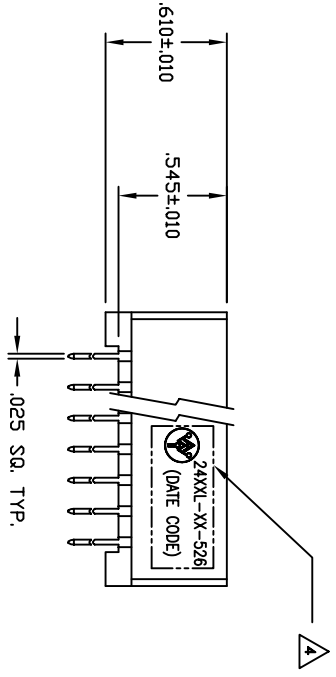
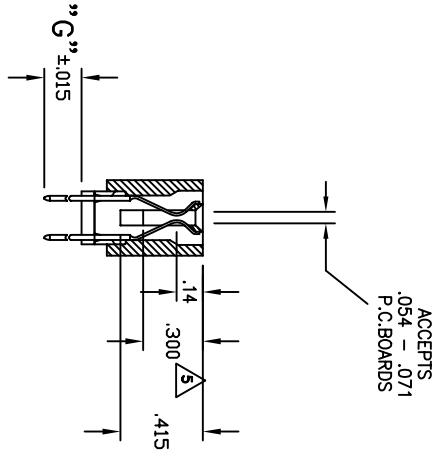
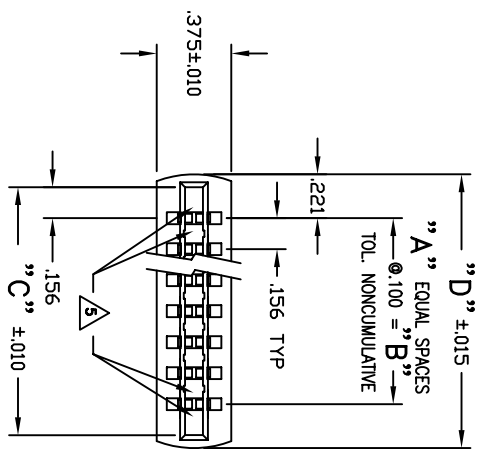
NOTES:

- MATERIALS AND FINISH:**
INSULATOR—GLASS FILLED THERMO-PLASTIC
POLYESTER, UL 94V-0 RATED, BLACK.
CONTACT MATERIAL—PHOSPHOR BRONZE
CONTACT PLATING—.000030 in Au OVER .000050 in Ni ON
CONTACT POINT, TAIL .000100 in MATTE FINISH 60/40 Sn/Pb
OVER .000050 in Ni.
- ELECTRICAL CHARACTERISTICS:**
CONTACT RESISTANCE - 10 MILLIOHMS MAX.
DIELECTRIC WITHSTANDING VOLTAGE—1800 VACMS AT SEA LEVEL.
INSULATION RESISTANCE—5000 MEGOHMS MIN.
CONTACT CURRENT RATING—3 AMPS AT 30°C.
- MECHANICAL CHARACTERISTICS:**
OPERATING TEMPERATURE—-55° TO +125°C.
DURABILITY—PER BELLCORE TR-NWT-000078.

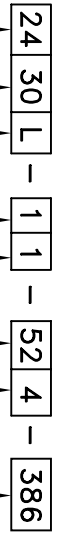
- 4 MARKING AS SHOWN, WHITE INK.
- 5 .300 AND .350 CARD SLOT DEPTH CONTROLLED BY THESE SURFACES ONLY.

DIMENSIONS

	NUMBER OF EQUAL SPACES	(TO DETERMINE, SUBTRACT 1 FROM THE NUMBER OF DESIRED DUAL CONTACT POSITIONS)
A	NUMBER OF EQUAL SPACES X .156	
B	NUMBER OF EQUAL SPACES X .156	
C	NUMBER OF EQUAL SPACES X .100 + .312	
D	NUMBER OF EQUAL SPACES X .100 + .442	
G	TERMINATION: SEE PART NUMBERING	



PART NUMBERING



- SERIES CODE (156 X .200)
- NUMBER OF DUAL POSITIONS THROUGH 43
- BODY STYLE L - W/O CARD SCOOPS
- CARD SLOT DEPTH (SEE NOTE 4)
- 1 - .415
- 2 - .350
- 3 - .300
- VARIATION CODE 386 - .610 HIGH INSULATOR
- MOUNTING STYLE 4 - NO MOUNTING EARS
- PLATING CODE (SEE NOTES) (Consult factory for other options)
- TERMINATION (DIM "G"):
- 0 - .125
- 1 - .190
- 2 - .375
- 3 - .465
- 4 - .570
- 5 - .850/.700

CUSTOMER DRAWING

APPROVED	
NAME	DATE
JWM	03-18
JMP	03-98
DKJ	03-98
JWM	03-98

THE INFORMATION, DATA AND/OR SERVICES CONTAINED ON THIS DRAWING ARE PROPRIETARY TO A.W. INDUSTRIES AND MAY NOT BE COPIED, REPRODUCED OR DISCLOSED IN ANY MANNER WITHOUT THE WRITTEN PERMISSION OF A.W. INDUSTRIES.

ALL DIMENSIONS ARE IN INCHES.

TOLERANCES:
DECIMAL .XX ±.015
.XXX ±.005
ANGLE ±1/2°

SCALE NONE

24XXL-XX-526 (DATE CODE)

A.W. Industries, Incorporated
6788 N.W. 17th AVENUE
Fort Lauderdale, FL 33309

CARD EDGE CONNECTOR, .610 HIGH
.156 X .200 CENTERS, SOLDER PINS

DRG. NO. 24XXL-XX-524-386

SHEET 1 OF 1