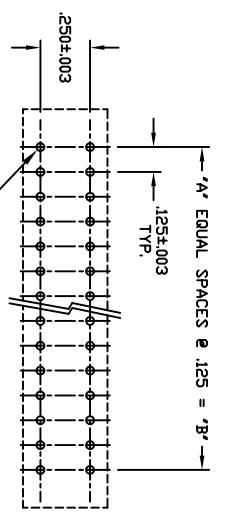
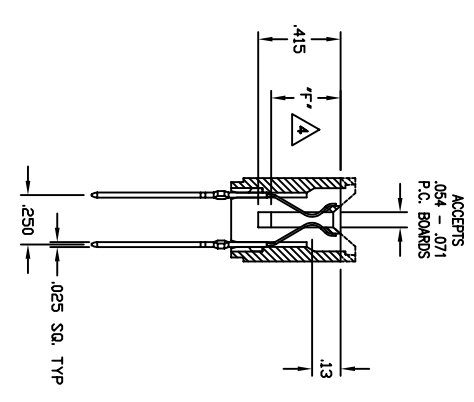


NOTES:

- 1. MATERIAL:**
INSULATOR MATERIAL - GLASS FILLED THERMO-PLASTIC
POLYESTER, 94V-0 RATED, BLACK.
CONTACT MATERIAL - GMA 510.
CONTACT PLATING - .00030 Au OVER .000050 Ni ON CONTACT POINT, TAIL AND COMPLIANT SECTION .000100 WHITE FINISH 60/40 SnPb.
- 2. ELECTRICAL CHARACTERISTICS:**
CONTACT RESISTANCE:
CONTACT TO DAUGHTER CARD - 10 MILLIOHMS MAX.
COMPLIANT SECTION TO P.T.H. - 2MILLIOHMS.
DIELECTRIC WITHSTANDING VOLTAGE - 1500 VAC.
INSULATION RESISTANCE - 5000 MEGOHMS.
CONTACT CURRENT RATING - 3 AMPS AT 30°C.
- 3. MECHANICAL CHARACTERISTICS:**
OPERATING TEMPERATURE - -55° TO +125°C.
DURABILITY - PER BELLCORE TR-NWT-000078.
P.C. BOARD INSERTION FORCE - 16 OZ MAXIMUM PER CONTACT PAIR WITH .071 THICK TEST GAUGE.
P.C. BOARD WITHDRAWAL FORCE - 1 OZ MINIMUM PER CONTACT PAIR WITH .054 THICK TEST GAUGE.
INSERTION FORCE - COMPLIANT SECTION 40 lbs MAXIMUM PER CONTACT.
WITHDRAWAL FORCE - COMPLIANT SECTION 10 lbs MINIMUM PER CONTACT.
HOLE SIZE REQUIREMENTS:
DRILLED HOLE DIA. .0433±.001,
PLATING: .001 TO .003 COPPER AND .0001 TO .0008 SOLDER.
FINISHED HOLE DIA. .040±.003.
.300 AND .350 CARD SLOT DEPTH CONTROLLED BY THESE SURFACES ONLY.
- 4. CARD SCOOPS OPTIONAL (SEE PART NUMBERING)**
L- WITHOUT CARD SCOOPS
H- WITH CARD SCOOPS



RECOMMENDED PCB LAYOUT



DIMENSIONS

Letter	Description
A	NUMBER OF EQUAL SPACES (TO DETERMINE, SUBTRACT 1 FROM THE NUMBER OF DESIRED DUAL CONTACT POSITIONS)
B	NUMBER OF EQUAL SPACES X .125
C	NUMBER OF EQUAL SPACES X .125 + .250
D	NUMBER OF EQUAL SPACES X .125 + .380
E	TAIL LENGTH: SEE PART NUMBERING
F	CARD SLOT DEPTH: SEE PART NUMBERING

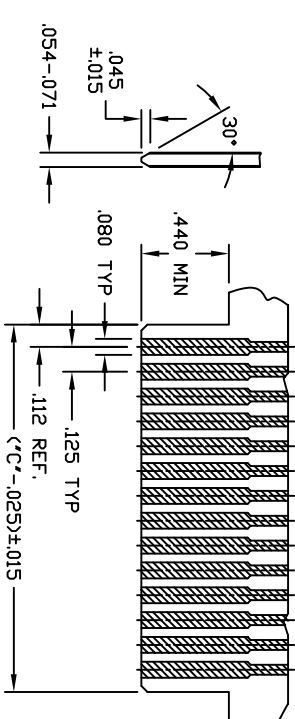
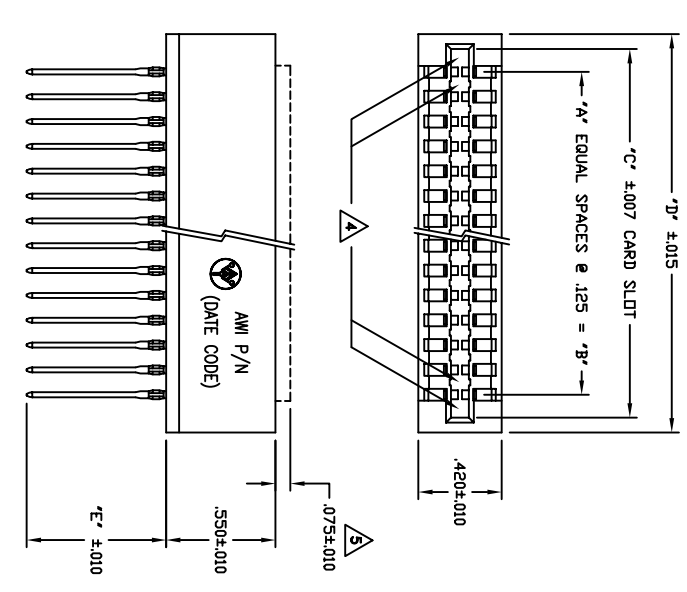
PART NUMBERING



- SERIES CODE
- NUMBER OF DUAL POSITIONS 10 THROUGH 50
- BODY STYLE
- L - WITHOUT CARD SCOOPS
- H - WITH CARD SCOOPS
- CARD SLOT DEPTH (SEE NOTE 4)
- 1 - .415
- 2 - .350
- 3 - .300
- PLATING CODE (SEE NOTES)
- TAIL LENGTH (E DIMENSION)
- 1 - .190
- 2 - .375
- 3 - .465
- 4 - .570
- 5 - .710

REVISIONS

REV	DESCRIPTION	DATE	APPROVED
A	INITIAL RELEASE	08-04-95	JWM
B	REVISED PER ESR 2116	03-22-01	JWM



CUSTOMER DRAWING

APPROVED	
NAME	DATE
JWM	08-95
YL	08-95
WBK	08-95
JWM	08-95

THE INFORMATION, DATA AND/OR SERVICES CONTAINED ON THIS DRAWING OR OTHERWISE ARE PROPRIETARY TO A.W. INDUSTRIES AND MAY NOT BE COPIED, REPRODUCED OR DISCLOSED IN ANY MANNER WITHOUT THE WRITTEN PERMISSION OF A.W. INDUSTRIES.

ALL DIMENSIONS ARE IN INCHES.

TOLERANCES:
DECIMAL .XX ±.015
.XXX ±.005
ANGLE ±1/2°

A.W. Industries, Incorporated
6788 N.W. 17th AVENUE
Fort Lauderdale, FL 33309

COMPLIANT PIN PRESS FIT CARD EDGE CONNECTOR
.125 X .250 CENTERS

SIZE C
SCALE NONE
DWG. NO. 23XXX-XX-52
ACAD FILE NO. 03-0261-0B
SHEET 1 OF 1